

# RISKS

IN THE NATURAL RESOURCES  
INDUSTRY

THE STEPS TO SAFETY

Using and maintaining lift-aid equipment can help eliminate back injuries.

Research shows that supervisors are often chosen for reasons that don't include safety.

**MEMIC**  
Partners for Workplace Safety

Call 1•888•887•8867

The purpose of this publication is to reveal some facts about your industry which will help you understand and reduce the costs of workplace injuries. We hope that you will use this information to **assess your workplace and create the safest and most productive worksite ever**. But if you need help, call us.

MEMIC data analysis indicates the following are areas of concern in logging, agriculture and other businesses that deal with natural resources. The following is a list of problems with recommended solutions that — if put into practice — can help make your business safer.

## 1. Material Handling

Natural resource industries often require workers to move heavy objects or repeat a series of motions. Either of these scenarios can cause injuries that can disable a worker. Two simple steps can lower the risk of these injuries.

- **Use and maintain lift-aid equipment** such as hand carts, dollies, and stationary rollers rather than lifting and moving materials by hand.
- **When materials must be moved by hand**, use appropriate body positioning. Avoid lifting from the floor level. Avoid extended reaching away from the body or overhead when moving materials.
- **Ask for help** when lifting heavy or bulky objects.

## 2. Lack of Effective Supervision:

Well-trained supervisors will manage well-planned jobs and will ultimately produce safe and productive job sites. Research shows that many supervisors are promoted into a supervisory position because of their technical ability or productivity. This does not mean that he or she is ready for the human relations challenges of leading people to work safely and productively.

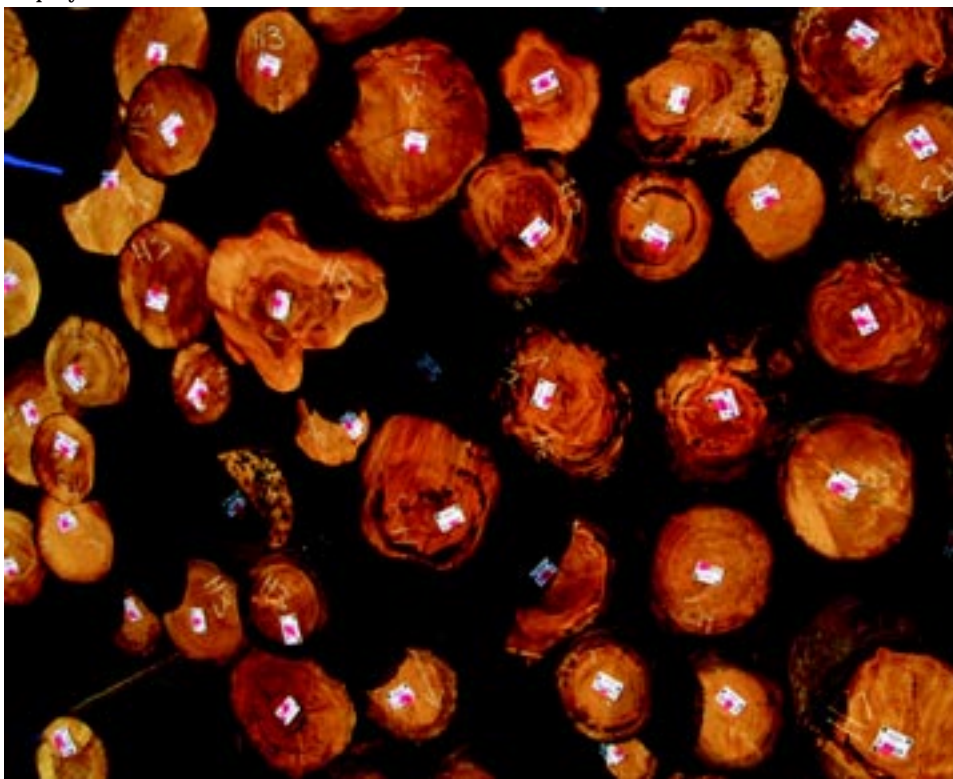
- **Supervisor Training.** Train your supervisors in human relations skills, behavior-based management and their responsibility toward safe production. MEMIC can help through our supervisory management training programs.



# 3 Medical Management Program:

If an employee is injured, managing that injury and returning the employee to work as soon as possible can help save money and retain valuable employees.

- **Develop a medical management program** which identifies a specific medical facility or doctor that will work with the employer to return employees to work or to an alternate duty as soon as they are able. The longer an employee is out of work, the more it costs the employer.



# 4 Avoiding Slips, Trips and Falls

Of the injuries that occur in natural resource industries, many are caused by slips, trips or falls. Here are some simple ways to prevent these injuries:

- **Keep floors and work areas clear** of debris, electrical cords, tools and other extraneous equipment. Make sure floors are not slippery.

- **Remove ice and snow** as often as practical and use sand and/or salt on slippery walking surfaces.

- **Fall protection is critical.** An enforceable fall protection policy should be in place. Anyone who is in a position to fall six feet or more should always use fall protection equipment.

© 1998 MEMIC



## The Fact File

### Top 10 Natural Resources Division Injury Sources

1. Tree
2. Log
3. Another Person
4. Container
5. Floors/ground surface
6. Fence
7. Motor Vehicle
8. Machinery
9. Chemical
10. Chain/Ropes/String

### Body Part injured

Head	8%
Chest	7%
Shoulder-hand	30%
Back	21%
Lower body	21%
Multiple	11%

### Top 5 Occupations with injuries

1. Logger
2. Freight handler
3. Industrial truck
4. Machine operator
5. Truck drivers

CALL MEMIC AT 1-888-887-8867